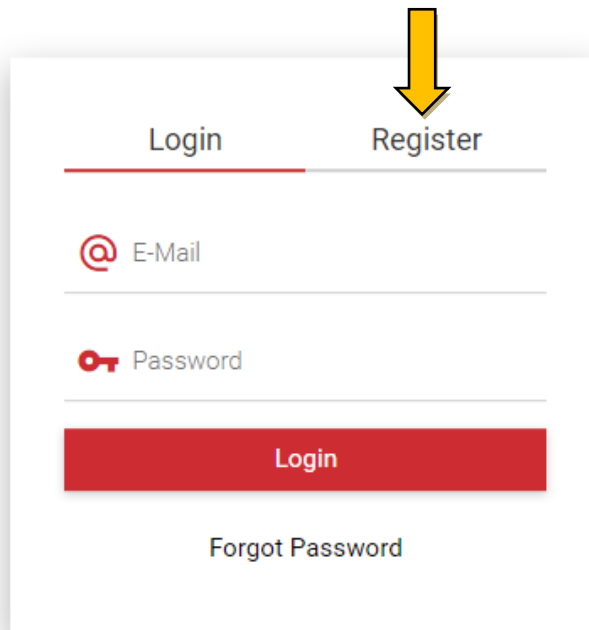


LOGGING-IN AND WORKING WITH THE SMARTZOOM PLATFORM

The **SmartZoom** platform is available at the link <https://lf1.smartzoom.com>. To enter the platform, you need to **register** into it the first time you are using it – use the option **Register** on the main page, and then use any personal data (personal or faculty e-mail address) to create an account which you will then be using to sign into the system. The system will send a confirmation e-mail to the address you provided, with an activation link you need to click on to activate your account.

The system can be set to more languages (including English), but it does not automatically translate the content for you. Because of that, all of the folder and picture names are provided in two versions (Czech / English).



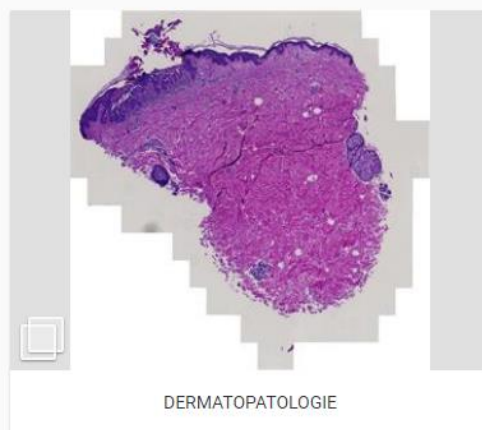
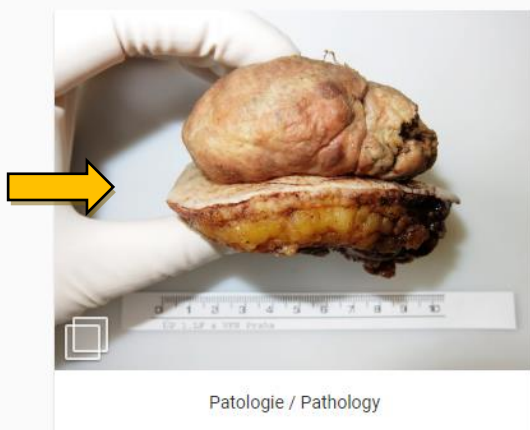
A screenshot of the SmartZoom login and registration interface. At the top, there are two tabs: "Login" and "Register". A yellow arrow points down to the "Register" tab. Below the tabs are two input fields: "E-Mail" with an @ icon and "Password" with a key icon. A red "Login" button is positioned below the fields. At the bottom, there is a link for "Forgot Password".

After registering and activating your account you can use the data entered (e-mail and password) to log into the system. You will automatically be assigned the role of a student, with student access rights. On the main page of the platform, choose the module **Pathology**.

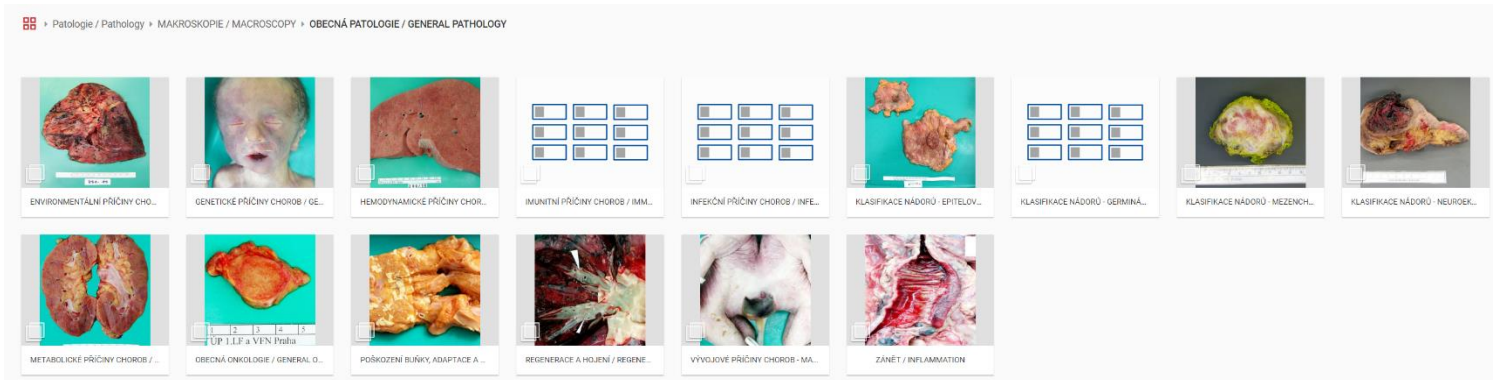


1. lékařská fakulta UK
Hello, michaela.bartu@lf1.cuni.cz

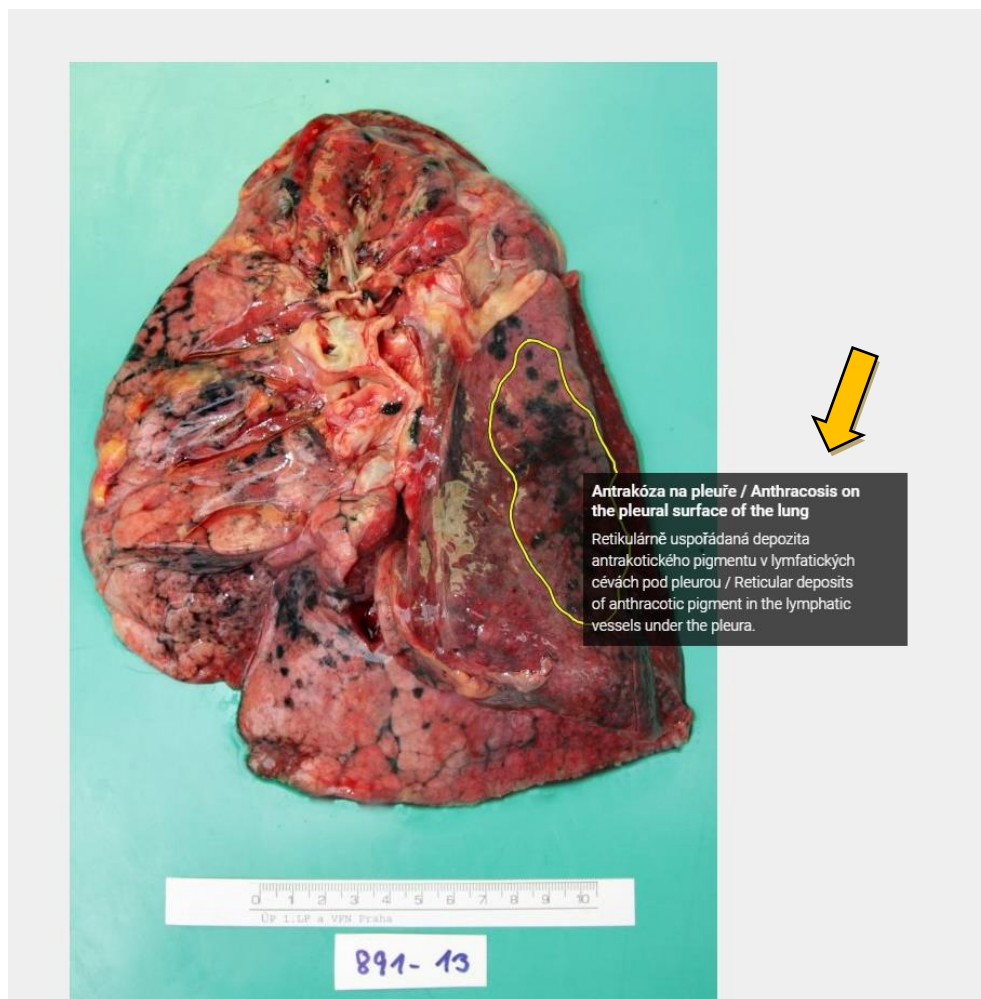
Search



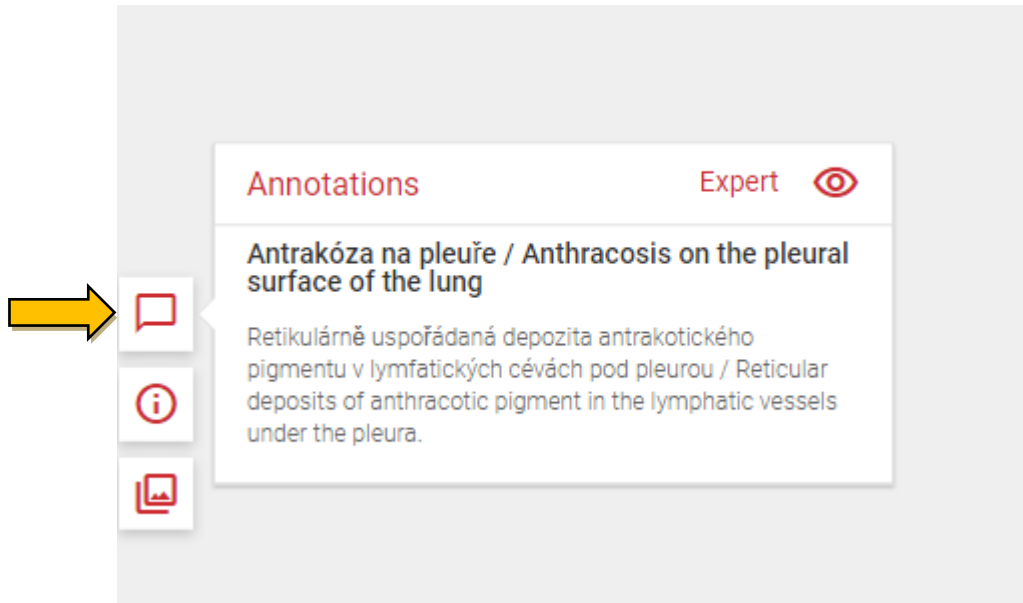
At the moment you can use and see the database containing **MACROSCOPIC** photos. Here you can choose the course (folder) of General or Organ pathology (which will be available from the summer semester). In these main courses, you can then see the individual folders with photos sorted into relevant topics.



After choosing a folder and a specific picture you can then use the controls to work with your chosen photo – to view in any magnification, rotate it, add your own annotations... Photographs where it was suitable, we have already provided with teacher's annotations to point out the specific pathology. These annotations can be seen when you hover your cursor/pointer over the marked areas:



You can also see any annotations added to a picture by using the **Annotations** button on the **left** side of the screen:



To move through the pictures once you are inside a folder you can also use the arrowhead button in the controls on the right (which shows which folder you are currently browsing).